



THE
5
LONG
WHEELBASE



There is a world above the three dimensional. Beyond domains that are familiar and frequented. Arching over the frameworks of time. It exists on a higher, exalted plane. It is the fifth dimension!

Ascend to this new-age with the BMW 5 Series. Enter a multiverse of space, light and intuition, For an interaction like never before. Illuminating and intuitive. Responsive and regaling. A marvel of neo-futuristic modes. An experience that is next-gen evolution.

Ascend to the BMW 5 Series Long Wheelbase.

Ascend to the fifth dimension.



INDEX



DESIGN	4
COMFORT AND LUXURY	10
POWER AND PERFORMANCE	15
INNOVATION AND TECH	17
STYLE CHOICES	21
ACCESSORIES	24

DESIGN



Make every entrance memorable with the BMW 5 Series Long Wheelbase, as it casts an ethereal aura, delivering a driving experience that is both refined and powerful.



ILLUMINATED KIDNEY GRILLE.

Command attention with the Illuminated Kidney Grille that highlights the vehicle's contours, whether it is stationary or moving, particularly in the dark.

The Adaptive LED Headlights with matrix technology adapt automatically to every driving situation. The equipment also features cornering lights and daytime running lights.

EXTERIOR TRIMS.

The BMW 5 Series Long Wheelbase offers two distinctive trim options, creating elegant contrasts that enhance the refined character of the vehicle. The Titanium Bronze trim with Silver Bronze interior accents exudes a warm elegance, creating a luxurious and inviting ambience, while the Satin Aluminium trim with Dark Silver interior accents offers a sleek, modern aesthetic that emphasises the dynamic presence of the vehicle.



EXTERIOR PACKAGE.

Every curve of the aerodynamic bumper and sculpted side panels headline performance, while the M badging on the sides rounds off the sporty appearance.



MODERN INTERPRETATION OF THE ICONIC HOFMEISTER KINK.

The embossed "5" on the C pillar extends the legendary legacy of the 5 Series and redefines the iconic Hofmeister kink, which has been a hallmark of BMW design since the 1960s, symbolising a perfect blend of elegance and sportiness while creating a visually striking silhouette.



'CRAFTEDCLARITY' GLASS APPLICATION.

Experience a smooth, luxurious feel with every operation, transforming your cockpit into a work of art with 'CraftedClarity' Glass Application.



PANORAMIC GLASSROOF.

The Panoramic Glassroof enhances the spacious feel of the interior. When desired, you can easily darken it using the electric roller blind.

VENTILATED FRONT SEATS.

Surround yourself in rich upholstery crafted with high-quality vegan leather that highlights the dual-tone perforated texture.

The front seats with active seat ventilation provide ultimate comfort by regulating the temperature to your liking, no matter what the weather is outside.



AMBIENT LIGHTING AND BMW INTERACTION BAR.

The BMW Interaction Bar seamlessly blends functions with aesthetics, offering intuitive control of essential features. The ambient lighting creates a unique atmosphere in your BMW and can be individually adapted to your personal taste.



The image shows the rear passenger area of a BMW 5 Series Long Wheelbase. The seats are upholstered in a rich orange leather with a prominent diamond-quilted pattern. The seatbacks feature a perforated texture. The interior is finished with dark wood trim on the side panels and a large panoramic sunroof. The overall atmosphere is one of high-end luxury and comfort.

COMFORT AND LUXURY

Within the sanctum of the BMW 5 Series Long Wheelbase, comfort ascends to a higher plane. An oasis of luxury envelops the senses from the moment you step in.



REAR COMFORT.

Experience a new dimension of space in the rear cabin. The extended legroom and long wheelbase create a distinctly expansive ambience. Custom-fit, removable sunblinds enhance your comfort by offering comprehensive sun protection and privacy.

SCULPTED SEATS.

Sink into sculpted, wraparound seats that cradle you in unmatched comfort, allowing you to feel as though you're gently sinking into luxury.

Meticulously crafted for optimal posture, these expansive seats feature enhanced thigh support and side bolstering for every passenger.

The rear seat's perfect 31-degree recline, designed ergonomically, ensures a truly relaxing experience, even on the longest journeys.





AUTOMATIC AIR CONDITIONING WITH 4-ZONE CONTROL.

The automatic air conditioning with 4-zone control provides individual climate comfort in the front seats as well as the rear outer seats, while upgrading the overall air quality.



REAR SEAT TABLET HOLDER.

Delivering extended flexibility, the holder's 360° rotation and adjustable angle makes it the perfect partner for travel. Its secure grip ensures devices stay in place, providing effortless access for passengers.



WIRELESS CHARGING TRAY.

Discover the comfort and convenience of wireless charging with the added safety of built-in cooling that protects your devices from overheating.

BOWERS & WILKINS SURROUND SOUND SYSTEM.



Immerse yourself in an enhanced audio experience with the Bowers & Wilkins Surround Sound System, featuring 18 speakers and 655 watts of pristine sound.

The speaker covers, available in Titanium Bronze or Satin Aluminium, seamlessly match the exterior trim of your choice, adding a touch of elegance while delivering acoustics as stunning as the design itself.

POWER AND PERFORMANCE



The BMW 5 Series Long Wheelbase delivers a driving experience that transcends expectations. Discover a new dimension of driving pleasure, where power meets innovation, and every journey becomes extraordinary.



ENGINE.

The new generation BMW TwinPower Turbo 2.0-Litre 4-cylinder engine guarantees maximum driving pleasure. It is notable for its agile power delivery as well as for its outstanding responsiveness even at low engine speeds, while also being fuel efficient and low in emissions. Feel the thrill of unrivalled power as it propels you from 0 to 100 km/h in a mere 6.5 seconds.

The latest generation of 48V mild hybrid technology integrated into the transmission improves both efficiency and response of the combustion engine.

HANDLING.

The BMW 5 Series Long Wheelbase delivers the best handling in its segment, thanks to its innovative vehicle design. This includes increased track widths on both the front and rear axles, a perfectly balanced 50-50 axle load distribution, lightweight construction, and specially designed struts that enhance chassis rigidity.

COMFORT SUSPENSION.

Drive in a sporty manner without having to compromise on comfort. The setting of individual components enables easy-to-control and safe vehicle handling.

The image shows the interior of a modern car, likely a BMW, from the driver's perspective. The dashboard is dominated by a large, wide infotainment screen displaying a colorful, abstract graphic. To the right of the screen is a digital instrument cluster. The steering wheel is black with the BMW logo in the center. The center console features a circular touchpad and various buttons. The seats are upholstered in a light-colored, possibly leather, material. The car is parked in an urban setting, with buildings and trees visible through the windows. The overall lighting is dim, suggesting an evening or indoor setting.

INNOVATION AND TECH

Cutting-edge technology seamlessly intertwines with the thrill of driving, creating a symphony of advanced features that elevate every journey. From state-of-the-art driver assistance systems to intuitive connectivity, each element is meticulously crafted to anticipate your needs and amplify your driving pleasure.

DRIVING ASSISTANT.

Driving Assistant warns you of danger when changing lanes, driving out of a parking space, or getting out of the vehicle and intervenes if necessary. For vehicles in your blind spot or those next to you, a warning symbol also flashes on the exterior mirror.

PARKING ASSISTANT PROFESSIONAL.

Parking Assistant Professional automatically parks and unparks your BMW. It learns and saves parking manoeuvres up to 200 meters after a single demonstration. You can then monitor the process remotely using your smartphone.





COMFORT ACCESS AND DIGITAL KEY PLUS.

Save yourself the trouble of having to hold up the vehicle key with Comfort Access. The vehicle recognises you from a distance and unlocks automatically. Instead of a traditional key, you have the option to employ a compatible smartphone as a digital key.



BMW CONNECTEDDRIVE.

One package.
Several digital services.
Navigate to your destination with traffic information or use apps and entertainment features on the go, bundled in the Connected Package Professional.

MY BMW APP.



Manage your BMW from anywhere with your phone by starting your engine, locking and unlocking the doors, and more. Receive maintenance alerts, schedule a service appointment with your preferred dealer, or start Remote Software Upgrades with just one tap. Keep track of where your BMW is located on the map or monitor your car's surroundings with Remote 3D view.

STYLES CHOICES



TRIMS.

BMW Individual Silver Bronze accent combined with Fineline open-pored fine-wood trim and Silver Bronze inlay. (Available with BMW 530Li M Sport-Titanium Bronze)



Dark Silver accent combined with fine-wood trim Grey Blue Ash, open-pored. (Available with BMW 530Li M Sport-Aluminium Satinated)



COLOURS.



Sparkling Copper Grey.



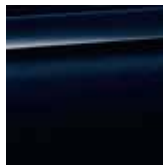
Carbon Black.



Mineral White.



Phytonic Blue.



Carbon Black.

WHEELS.



18" light alloy wheels Y-spoke style 932 Lightning Grey.



19" M light alloy wheels Double-spoke style 935 M Bicolour Midnight Grey.
(Optional upgrade)

ACCESSORIES



ESSENTIAL ACCESSORIES.



Tyre Mobility Kit



Coat Hanger



Advanced Car Eye 3.0 PRO



Key Fob in Crystal Clarity



Key Fob in Leather

M PERFORMANCE PARTS.



Rear Diffuser



Front Attachment



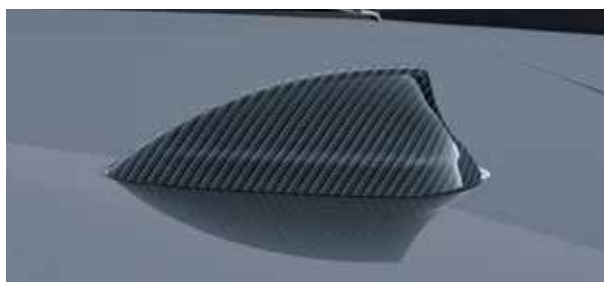
Mirror Caps in Carbon Fibre



19" M Double-spoke Style 935 M
in Bicolour Midnight Grey



Stainless Steel Footrest



Aramide Aerial Cover in Carbon Fibre

TECHNICAL DATA.

530Li M Sport		
BMW TwinPower Turbo engine		
Cylinders/valves	–	4/4
Capacity	cm ³	1998
Max. output/ engine speed	kW (hp)/ rpm	190 (258)/ 4500-6500
Max. torque/ engine speed	Nm/ rpm	400/ 1600-4600
Power transmission		
Type of drive	–	Rear-Wheel Drive
Standard transmission	–	8 Speed Steptronic transmission with gearshift paddles
Performance		
Top speed	km/h	250
Acceleration 0–100 km/h	s	6.5
Consumption^{2,3} – All engines conform to the BS6 standard		
Combined	km/l	15.7
Exhaust emissions standard (type-certified)	–	BS6
Combined CO ₂ emissions	g/km	151
Tank capacity, approx.	l	60
Wheels/tyres		
Tyre size	–	225/55 R18 245/45 R19 (optional)
Wheel size	–	7.5J x 18 8.5J x 19 (optional)
Material	–	Light alloy

Notes:

- Performance data as measured in the emission test done under controlled conditions of environment, driving cycle, fuel etc. as specified in Rule 115 of the Central Motor Vehicle Rules, 1989.
- The models, equipment, and possible vehicle configurations illustrated in this brochure may differ from vehicles supplied in the Indian market.
- Some options may contain mandatory combinations with other options. Please check with your local Authorised BMW Dealer.
- Terms and conditions apply. For further information, please contact your local Authorised BMW Dealer.



SCAN TO KNOW MORE.

